

Stainless Steel Toilets Back to wall P trap

Product Code ABTWP

Material:

The WC pan is manufactured from 1.6 and 2mm thick stainless steel.

Outlet Trap:

The WC pan is manufactured with a 100 mm overall diameter horizontal outlet with a 50mm deep water seal suitable for a plastic WC connector.

Seat:

The WC pan incorporates a highly polished contoured rim which acts as a built in seat. Alternatively the WC pan can be supplied with a conventional style seat.

Inlet:

The WC pan is manufactured with a 55 mm internal diameter water inlet socket. A rubber inlet connector suitable for a 38 mm overall diameter flushpipe is supplied with the WC pan.

Fixings:

The WC pan is supplied with a floor fixing plate and four M12 x 150 mm long bolts to suit walls up to 118 mm thick. Optional M12 x 300 mm long bolts can be supplied for walls up to 268 mm thick. All fixings are fully concealed.

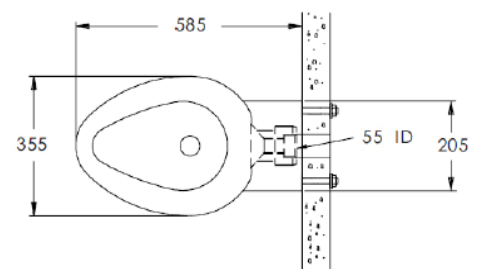
Cistern and Flushpipe:

As an option the WC pan can be supplied with a choice of plastic cisterns for concealed duct mounting;

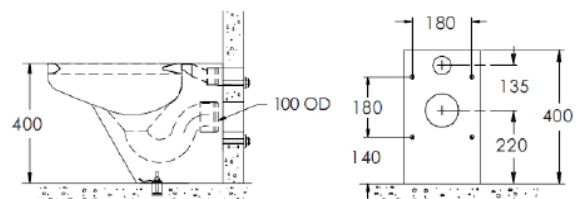
Performance Standards:

Efficient low volume flushing for maximum water economy on a dual flush of 4/2.6 litres or an "effective" 3 litre flush. The WC pan complies with the constructional and performance requirements of EN 997:2003 Part 2 and has been satisfactorily tested in accordance with the Water Supply (water fittings) Regulations 1999. The WC pan therefore provides:

[exceptional performance, maximum environmental benefits, and full compliance with latest regulations.](#)



Plan



End Elevation

Rear Elevation